



jordan fishwick

WEST DIDSBURY
Mersey Crescent

Mersey Crescent, West Didsbury, M20 2YJ

Guide Price £395,000



The Property

An impressive, SIGNIFICANTLY EXTENDED, three bedroom semi detached property in a convenient DIDSBURY location, being within a short stroll of a wide expanse of PLAYING FIELDS. The well presented accommodation benefits from both uPVC double glazing and gas central heating, IN OUTLINE COMPRISING :- Extended entrance hallway with downstairs WC, lounge opening through to a superb extended family/living area with bi-fold doors and skylights, and an impressive dual aspect dining kitchen with a comprehensive range of units. To the first floor are three well-proportioned bedrooms and a fitted bathroom. Externally, the property enjoys an enviable position with a south-west facing lawned garden to the rear, whilst a block paved driveway to the front provides ample off-road parking.

Directions

M20 2YJ



- Significantly extended
- Three bedroom semi detached
- Large family/living room
- Dual aspect kitchen/dining room
- Downstairs WC
- Gas central heating
- uPVC double glazing
- Block paved driveway
- South-west facing garden
- West Didsbury location

Postcode - M20 2YJ

EPC Rating - C

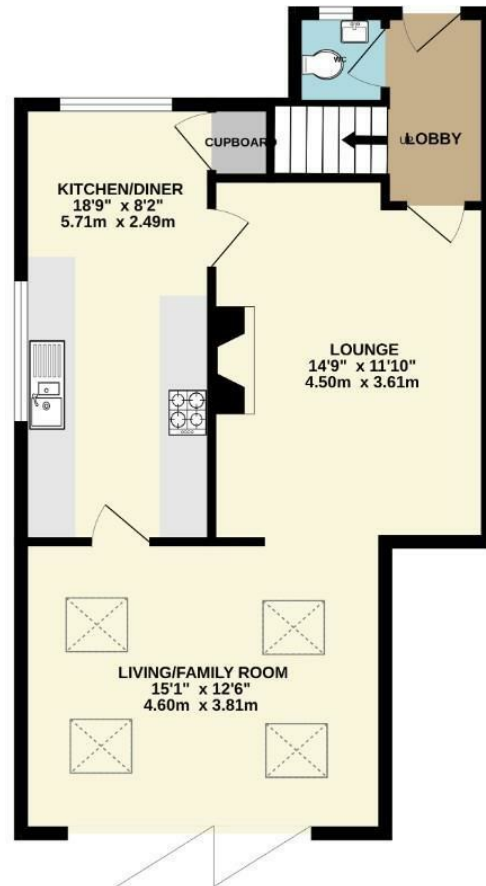
Floor Area - 970.00 sq ft

Local Authority - Manchester City Council

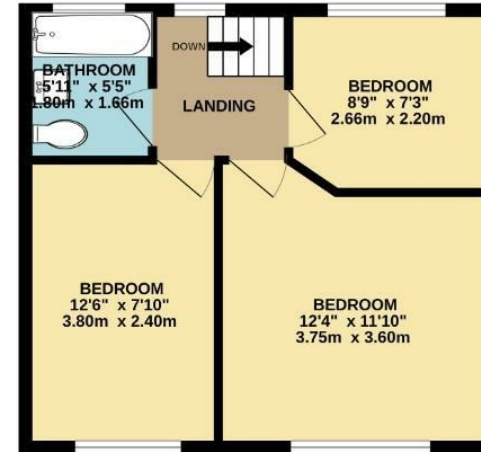
Council Tax - A



GROUND FLOOR
595 sq.ft. (55.3 sq.m.) approx.



1ST FLOOR
375 sq.ft. (34.8 sq.m.) approx.



TOTAL FLOOR AREA : 970 sq.ft. (90.1 sq.m.) approx.
Measurements are approximate. Not to scale. Illustrative purposes only
Made with Metropix ©2026



These particulars are believed to be accurate but they are not guaranteed and do not form a contract. Neither Jordan Fishwick nor the vendor or lessor accept any responsibility in respect of these particulars, which are not intended to be statements or representations of fact and any intending purchaser or lessee must satisfy himself by inspection or otherwise as to the correctness of each of the statements contained in these particulars. Any floorplans on this brochure are for illustrative purposes only and are not necessarily to scale.

Offices also at: Wilmslow, Macclesfield, Hale, Sale, Chorlton, Glossop, Manchester & Salford

757-759 Wilmslow Road, Didsbury Village, Manchester

0161 445 4480

didsbury@jordanfishwick.co.uk
www.jordanfishwick.co.uk